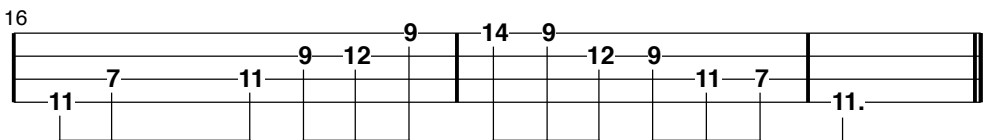
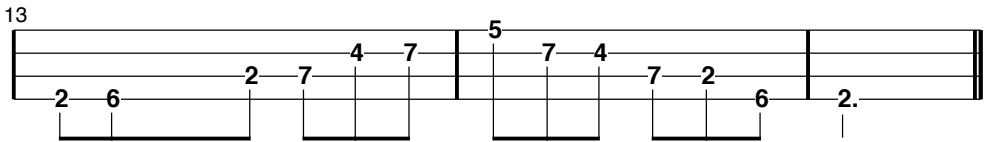
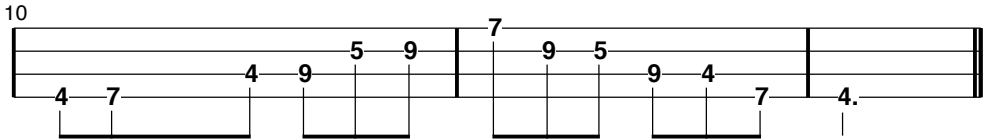
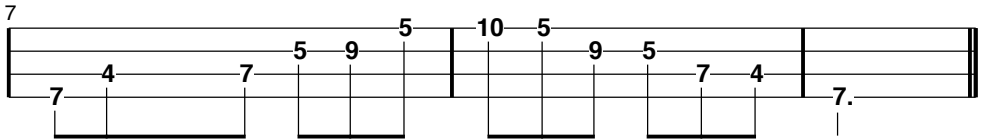
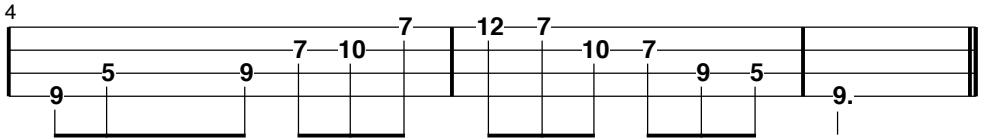
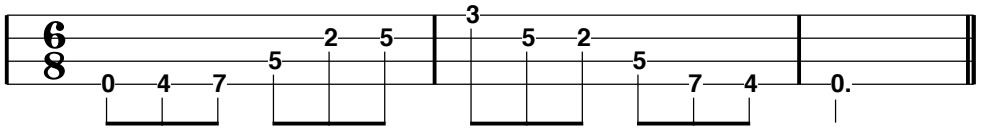


Minimum Daily Requirements

David Grisman

TabEdited by Wendy Anthony
from Mandozine
Copyright1986 Dawg Music



19

9 6 9 7 11 7 12 7 11 7 9 6 9.

A musical staff with two lines. The top line contains the numbers 7, 11, 7, 12, 7, 11, 7. The bottom line contains the numbers 9, 6, 9, 9, 6, 9. Vertical lines connect the numbers on the top line to the numbers on the bottom line. A bar line is placed after the first three notes (9, 6, 9) and after the next three notes (9, 6, 9). The final note is a dotted quarter note.

22

6 2 6 4 7 4 9 4 7 4 6 2 6.

A musical staff with two lines. The top line contains the numbers 4, 7, 4, 9, 4, 7, 4. The bottom line contains the numbers 6, 2, 6, 6, 2, 6. Vertical lines connect the numbers on the top line to the numbers on the bottom line. A bar line is placed after the first three notes (6, 2, 6) and after the next three notes (6, 2, 6). The final note is a dotted quarter note.

25

4 8 4 9 6 9 7 9 6 9 4 8 4.

A musical staff with two lines. The top line contains the numbers 4, 9, 6, 9, 7, 9, 6. The bottom line contains the numbers 4, 8, 4, 9, 4, 8, 4. Vertical lines connect the numbers on the top line to the numbers on the bottom line. A bar line is placed after the first three notes (4, 9, 6) and after the next three notes (9, 4, 8). The final note is a dotted quarter note.

28

1 4 1 6 2 6 4 6 2 6 1 4 1.

A musical staff with two lines. The top line contains the numbers 4, 6, 2, 4, 6, 2. The bottom line contains the numbers 1, 4, 1, 6, 6, 1, 4. Vertical lines connect the numbers on the top line to the numbers on the bottom line. A bar line is placed after the first three notes (1, 6, 2) and after the next three notes (6, 1, 4). The final note is a dotted quarter note.

31

11 8 11 9 13 9 14 9 13 9 11 8 11.

A musical staff with two lines. The top line contains the numbers 9, 13, 9, 14, 9, 13, 9. The bottom line contains the numbers 11, 8, 11, 9, 9, 11, 8. Vertical lines connect the numbers on the top line to the numbers on the bottom line. A bar line is placed after the first three notes (11, 9, 13) and after the next three notes (9, 11, 8). The final note is a dotted quarter note.

34

8 4 8 6 9 6 11 6 9 6 8 4 8.

A musical staff with two lines. The top line contains the numbers 6, 9, 6, 11, 6, 9, 6. The bottom line contains the numbers 8, 4, 8, 6, 6, 8, 4. Vertical lines connect the numbers on the top line to the numbers on the bottom line. A bar line is placed after the first three notes (8, 6, 9) and after the next three notes (6, 8, 4). The final note is a dotted quarter note.